



RESEARCH ARTICLE

10.1029/2018JD030014

The Propagation Effects of Lightning Electromagnetic Fields Over Mountainous Terrain in the Earth-Ionosphere Waveguide

**Dongshuai Li¹, Alejandro Luque¹, Farhad Rachidi², Marcos Rubinstein³,
Mohammad Azadifar³, Gerhard Diendorfer⁴, and Hannes Pichler⁴**

¹Instituto de Astrofísica de Andalucía (IAA), CSIC, Granada, Spain, ²Electromagnetic Compatibility Laboratory, Swiss Federal Institute of Technology (EPFL), Lausanne, Switzerland, ³University of Applied Sciences Western Switzerland, Yverdon-les-Bains, Switzerland, ⁴OVE Service GmbH, Department ALDIS (Austrian Lightning Detection and Information System), Vienna, Austria

Key Points:

- A new model is developed to analyze the effect of the medium parameters in the Earth-ionosphere waveguide and tested with measured data
- The time delays and amplitudes of the fields are affected by the electron density profile, the earth curvature and mountainous terrain
- The numerical simulations agree well with the observations after taking into account the effect of the medium parameters in the ionosphere

Correspondence to:D. Li,
dsl@iaa.es**Citation:**

Li, D., Luque, A., Rachidi, F., Rubinstein, M., Azadifar, M., Diendorfer, G., & Pichler, H. (2019). The propagation effects of lightning electromagnetic fields over mountainous terrain in the Earth-ionosphere waveguide. *Journal of Geophysical Research: Atmospheres*, 124. <https://doi.org/10.1029/2018JD030014>

Received 20 NOV 2018

Accepted 6 DEC 2019

Accepted article online 11 DEC 2019

Abstract In this paper, a full-wave two-dimensional Finite-Difference-Time-Domain model is developed to evaluate the propagation effects of lightning electromagnetic fields over mountainous terrain in the Earth-ionosphere waveguide. In the model, we investigate the effect of the Earth-ionosphere waveguide structure and medium parameters, including the effect of the ionospheric cold plasma characteristics, the effect of the Earth curvature, and the propagation effects over mountainous terrain. For the first time, the obtained results are validated against simultaneous experimental data consisting of lightning currents measured at the Säntis Tower and electric fields measured in Neudorf, Austria, located at 380-km distance from the tower. It is shown that both the time delays and amplitudes of the lightning electromagnetic fields at 380-km distance can be strongly affected by the ionospheric electron density profile, the mountainous terrain, and the Earth curvature. After taking into account the effect of the irregular terrain between the Säntis Tower and the field measurement station, the vertical electric fields calculated by using our model are found to be in good agreement with the corresponding measured cases occurred in both daytime and nighttime. The ideal approximation used in either the classical solutions or the simplified models might lead to inaccuracies in the estimated reflection height. Furthermore, we discuss the sensitivity of our results by considering different return stroke models, as well as different typical values of the return stroke speed and of the ground conductivity.

1. Introduction

Very low frequency (VLF) waves generated by lightning discharges propagate in the Earth-ionosphere waveguide (EIWG) through a process of multiple reflections occurring between the lower D region of the ionosphere (60–90 km) and the Earth ground surface. Since this altitude range is too low for satellites and too high for balloons, ground-based recorded VLF signals that involve the information of the ionosphere and its variability are well known as an efficient tool to probe the localized variation of the ionospheric D region parameters (Inan et al., 2010).

In the past 30 years, a number of models and methods have been developed to study the lightning discharge interaction with the lower ionosphere. Different full-wave theoretical approaches have been used, such as the wave-hop (ray theory) method (Jacobson et al., 2009, 2018; Qin et al., 2017; Shao and Jacobson, 2009), the waveguide mode theory (Budden, 1961; Cheng and Cummer, 2005; Cummer et al., 1998), or numerical methods such as the Finite-Difference-Time-Domain (FDTD) method (Azadifar et al., 2017; Han et al., 2011; Hu and Cummer, 2006; Marshall, 2012; Tran et al., 2017) and the full-wave Finite Element Method (Lehtinen and Inan, 2008; Lehtinen and Inan, 2009). Although empirical models such as the International Reference Ionosphere (IRI) model (Bilitza and Reinisch, 2008) and the semiempirical FIRI model based on radio wave propagation data from rocket soundings (Friedrich and Torkar, 2001) could provide the specification of the ionosphere parameters at a given time and location, to simplify the calculation, most VLF remote sensing studies make use of the two-parameter profile introduced by Wait and Spies (1964) consisting of the reference height h_0 and the steepness q to infer the ionospheric parameters. The ionospheric parameters could change from day to night at different locations even during a magnetically quiet periods (Wait and Spies, 1964; Wait and Walters, 1963).

©2019. The Authors.

This is an open access article under the terms of the Creative Commons Attribution-NonCommercial-NoDerivs License, which permits use and distribution in any medium, provided the original work is properly cited, the use is non-commercial and no modifications or adaptations are made.

Recent studies show that the amplitude and phase perturbation for VLF signals have a complicated relationship with the ionospheric D region parameters. The propagation of the VLF signal between the Earth ground surface and the lower ionosphere can be affected by many factors, such as the propagation distances (Aoki et al., 2015; Azadifar et al., 2017; Tran et al., 2017), the attenuation due to the ground conductivity (Aoki et al., 2015; Tran et al., 2017), the electron and neutral particle densities (Lay and Shao, 2011; Lay et al., 2014; Marshall, 2012), the Earth curvature (Tran et al., 2018) and the presence of the geomagnetic field (Lay et al., 2014; Shao et al., 2013).

However, for simplicity and computational efficiency, most models and methods have been simplified. Some studies ignore the effect of the Earth curvature (Aoki et al., 2015; Tran et al., 2017); others consider the effect of the Earth curvature based on the correction algorithm and full-wave ray theory over the spherical Earth (Hu and Cummer, 2006; Jacobson et al., 2018, 2009; Qin et al., 2017; Shao and Jacobson, 2009) or use a staircase approximation of the curved surface of the Earth (Tran et al., 2018). Most studies considered the effect of the ground conductivity by assuming a homogeneous finitely conducting smooth ground (Aoki et al., 2015; Hu and Cummer, 2006; Qin et al., 2017; Shao et al., 2013; Tran et al., 2018). More recently, the effect of the propagation of lightning electromagnetic fields over a rough surface has been investigated in many studies (Cooray and Ming, 1994; Ming and Cooray, 1994; Li et al., 2016a, 2016b, 2017, 2014; Liu et al., 2016; Schulz and Diendorfer, 2000; Zhang, Jing, et al., 2012; Zhang, Yang, et al., 2012). It was noted that the waveshape, peak value, and time delay of the lightning-radiated fields could be strongly affected when the propagation proceeds along a mountainous terrain or a nonflat ground. The assumption of a finitely conducting smooth ground might result in a significant underestimation of the peak of the electric fields in mountainous areas (Li et al., 2017, 2016b). Moreover, previous studies presenting comparison between simulations and experimental data are based on relative values because the incident sources were unknown. In many cases, the lightning current waveform is calculated based on analytical expressions, and the lightning channel is treated unrealistically as a vertical electric dipole (Bérenger, 2005; Hu and Cummer, 2006; Qin et al., 2017; Schmitter, 2014; Shao and Jacobson, 2009), or only one of the transmission-line-based models is used to discuss the influences of the lightning source characteristics (Aoki et al., 2015; Azadifar et al., 2017; Tran et al., 2017). To the best of our knowledge, none of the previous studies has considered the propagation effect of lightning electromagnetic fields over mountainous terrain along the Earth's curved surface based on the simultaneously measured channel-base lightning current waveform and its radiated electromagnetic fields. The reason for this is that, as discussed by Thomson (2010), the measurements at intermediate locations were not generally practicable due to factors such as the presence of the sea, lack of ready access via roads, or low, uncertain, rapidly varying, ground conductivity.

Therefore, to better investigate the propagation effect of lightning-radiated electromagnetic fields in the EIWG, a full-wave two-dimensional (2-D) spherical Finite-Difference-Time-Domain (FDTD) model is developed in this paper including the effect of the ionospheric cold plasma characteristics, the effect of the Earth curvature, and the propagation effects over a mountainous terrain. The simulation results are validated against simultaneous experimental data obtained from the Säntis Tower in Switzerland and the 380-km distance electric field station at Neudorf in Northern Austria. Furthermore, we discuss the sensitivity of the obtained results by considering different return stroke models, as well as different typical values of the return stroke speed and of the ground conductivity.

2. Experimental Data

Simultaneous experimental data were obtained from the Säntis Tower in Switzerland and from the 380-km distance electric field station at Neudorf in Northern Austria. The 124-m-tall Säntis Tower is located on the top of Mount Säntis in Switzerland. It has been instrumented since 2010 to measure the lightning current waveforms and their time derivatives at two different heights (24 and 82 m) along the Tower. More details on the measurement sensors and instrumentation system can be found in (Romero et al., 2012; Romero et al., 2013; Azadifar et al., 2014). Figure 1 shows the locations and pictures for the Säntis Tower (red triangle) and the electric field station in Neudorf (red dot).

The data used in this study were recorded on May 7, 2014. They consist of 10 flashes that occurred during the period from 9:00 to 23:00 local time (LT) in Switzerland. Table 1 summarizes the information on all

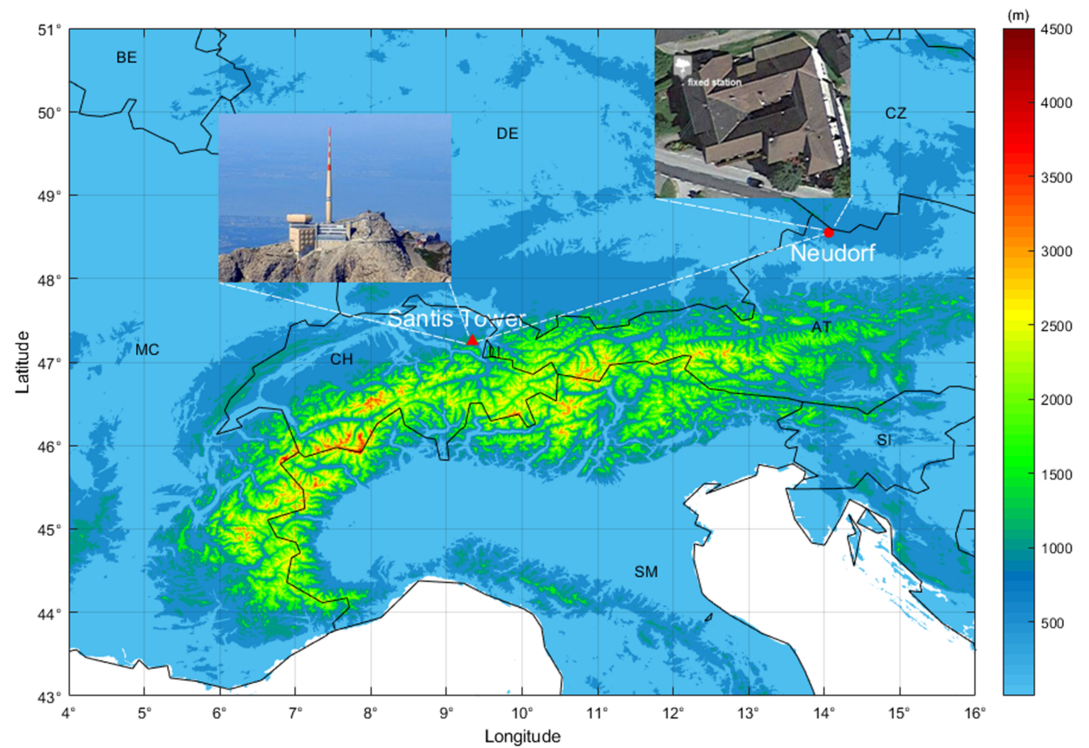


Figure 1. The topographic map of the selected region including the locations of the Sants Tower (red triangle) and the 380-km Electric field station in Neudorf (red dot).

the events captured on May 7, 2014: occurrence time, peak of the largest return strokes, number of return strokes, and number of negative and positive return strokes. Note that, throughout the paper, we only focus on the highest return stroke current in each flash. As shown in Table 1, all the peak values of the largest return stroke currents are negative, except the one corresponding to the flash that occurred at 20:42:26 LT. Unfortunately, the electric field corresponding to this particular positive return stroke current is too noisy to identify it in the background signal at the 380-km station. Therefore, in this study, we only focus on the negative return strokes. Figures 2a and 2c give, respectively, the channel-base current of the flash that occurred at 09:02:39 LT during daytime and the corresponding 380-km electric field. Figures 2b and 2d further present the highest stroke current in this flash and the associated 380-km electric field. Figure 3 is similar to Figure 2

Table 1

Occurrence Time (LT), Peak of the Highest Return Stroke Current (kA), Total Number of Return Strokes (Total_RS), and Number of Negative (Neg_RS) and Positive Return Strokes (Pos_RS) for All the Flashes Captured on May 7, 2014

Time (LT)	Peak of the largest RS current (kA)	Total_RS	Neg_RS	Pos_RS
2014/5/7 09:02:39 ^a	-5.5	10	10	0
2014/5/7, 09:08:55	-5.0	5	5	0
2014/5/7, 18:11:48	-9.5	12	12	0
2014/5/7, 20:42:26	33.6	19	16	3
2014/5/7, 20:46:00	-7.2	7	6	1
2014/5/7, 21:26:05	-6.4	15	15	0
2014/5/7, 21:28:25	-8.4	18	18	0
2014/5/7, 21:29:56	-9.0	8	7	1
2014/5/7, 21:32:02	-14.8	13	13	0
2014/5/7, 23:26:59 ^b	-13.7	17	17	0

^a Corresponding to Figure 2. ^b Corresponding to Figure 3.

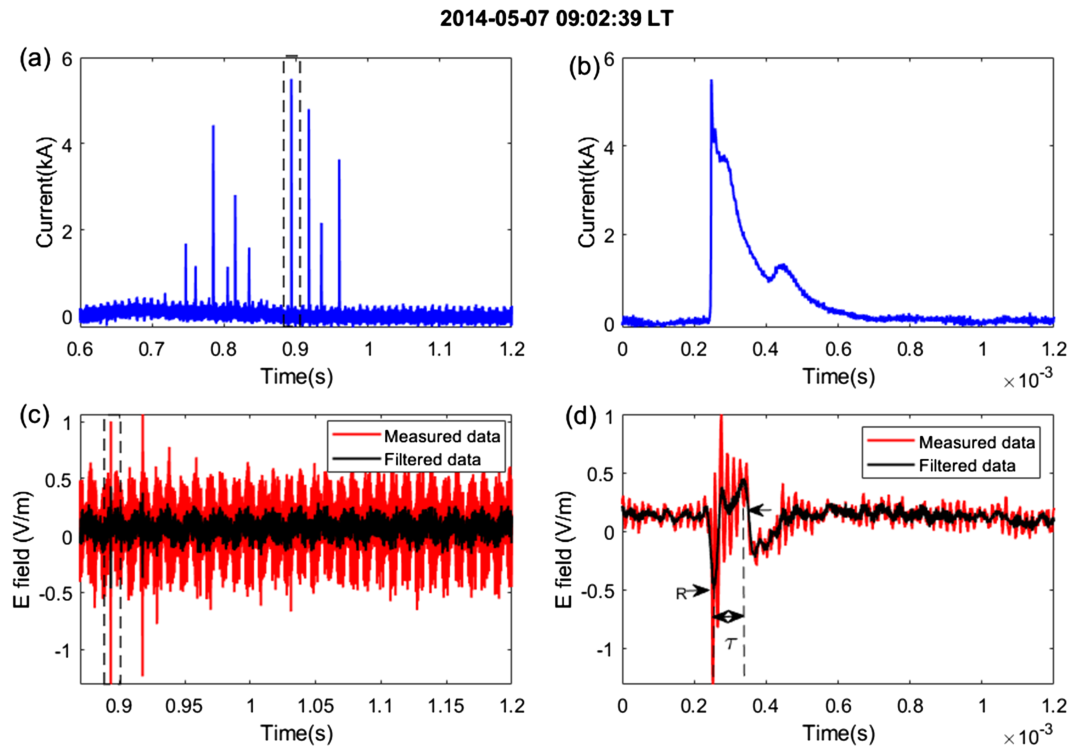


Figure 2. Simultaneously recorded experimental data associated with the lightning flash occurred on May 7, 2014 at 09:02:39 LT. The flash current (a) and its associated E field waveform (c) and the largest stroke current in this flash (b) and its associated E field waveform (d) (measured and filtered E field data are shown in red and black lines, respectively).

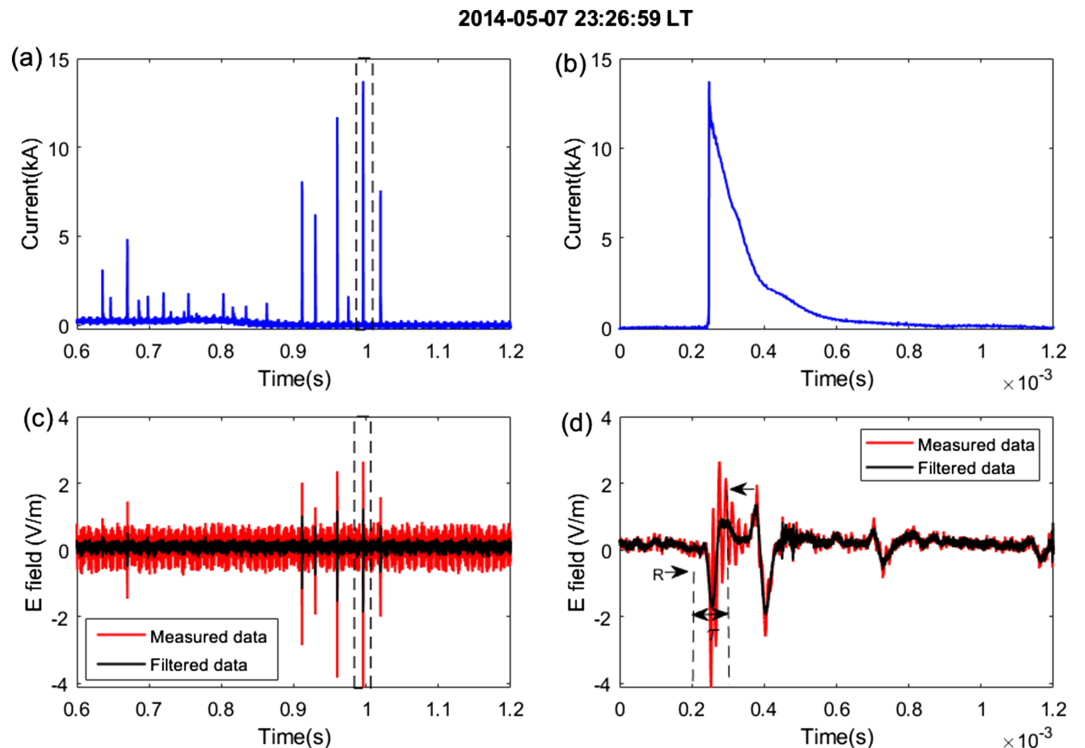


Figure 3. Similar to Figure 2 but for the simultaneous experimental data associated with the lightning flash occurred on May 7, 2014 at 23:26:59 LT (measured and filtered E field data are shown in red and black lines, respectively).

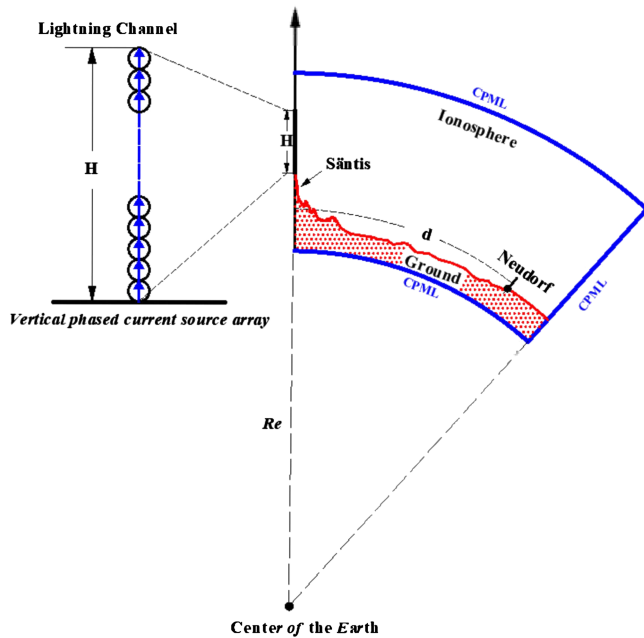


Figure 4. The geometry of the computational domain of the FDTD model.

but for the flash that occurred at 23:26:59 LT during nighttime. It should be noted that our 380-km field measuring system exhibited a high noise level at frequencies of 200, 300, 400, and 500 kHz. In order to reduce the noise, 20-kHz bandwidth notch filters centered at each of the abovementioned frequencies were applied to all recorded signals (see Figure 5 in Azadifar et al., 2017 for more information). In addition, a 60-kHz ringing can be seen in all the measured E field waveforms. The origin of this ringing is unknown and currently under investigation. It might be due to a malfunction of the integrator at the measuring station or electromagnetic noise coupling to the digitizer card caused by a bad PC power supply. In order to reduce the effect of the 60-kHz ringing noise, throughout this study, we applied a third-order Butterworth filter that stops the frequencies between 40 and 200 kHz based on the MATLAB digital Butterworth Bandstop filter toolbox. We selected this filter since the ringing noise in our case being relatively well separated in frequency from the signal without ringing noise. In Appendix A, we discuss the difference between the used filter and the other available filters (such as Bessel filter, Gauss filter, and a simple brick-wall filter; see Appendix A for details). In order to assess the effect of the used filter, we applied it to the FDTD simulated E field waveform (see Appendix A). The results of the comparison between the original and filtered waveforms support the fact that the ringing noise in our case is sufficiently separated in frequency from the received signal, and it can be effectively removed after applying the filter.

The final filtered data for E field waveforms are shown in black lines in Figures 2c, 2d, 3c, and 3d; the detailed method for the filter used to minimize the effect of the 60-kHz noise is presented in Appendix A.

3. FDTD Modeling

In this section, a full-wave FDTD model including the effect of the ionospheric reflections and the propagation effects of a mountainous terrain is presented. In our simulation, the measured return stroke currents obtained from the Säntis Tower were directly used as input, and the electric field waveforms at 380-km distance from the Säntis Tower were calculated to compare with the corresponding measured electric field data at the Neudorf station. As shown in Figure 4, the FDTD modeling is based on 2-D spherical coordinates with the sector region defined by the center of the Earth (Bérenger, 2002; Thèvenot et al., 1999). Note that the model itself naturally includes the effect of the Earth curvature by considering the irregular terrain along the Earth's curved surface. The lightning return stroke channel is modeled using transmission-line-type models assumed as a vertical phased current-source array (Baba and Rakov, 2003) in our FDTD model. Mount Säntis with the Tower on the top and the Neudorf field measurement point are also shown in Figure 4.

3.1. Ionospheric Model

As mentioned in section 1, lightning VLF wave propagation between the Earth's ground surface and the lower ionospheric D region can be affected by the electron and neutral particle densities and the geomagnetic field (Lay and Shao, 2011; Lay et al., 2014; Marshall, 2012). The FDTD model used in this study solves the fundamental equations as suggested by Marshall (2012) including the Maxwell's equations and Langevin equation. The effect of the ionospheric parameters is included in the Langevin equation as shown in Equation (1). In the simulation, only the effects of electrons are considered since ion mobility can be neglected in the lower D region ionosphere (Han and Cummer, 2010).

$$\frac{\partial \vec{J}_e}{\partial t} + \nu_e \vec{J}_s = \omega_{c,e}^{-1} \times \vec{J}_s + \omega_{p,e}^2 \epsilon_0 \vec{E}, \quad (1)$$

where J_e is the self-consistent conduction current driven by the electric field, $\omega_{c,e}^{-1} = e\vec{B}_0/m_e$ is the gyrofrequency vector associated with the geomagnetic field vector \vec{B}_0 , $\omega_{p,e}^2 = \sqrt{e^2 N_e/m_e \epsilon_0}$ is the plasma frequency, $\nu_e = e/(\mu_e m_e)$ is the collision frequency between electrons and the neutral air, and e , m_e , and N_e are the charge, mass, and number density of electrons, respectively. The electron mobility μ_e is considered as a function of the local electric field and the background gas number density N_{gas} based on the profile proposed

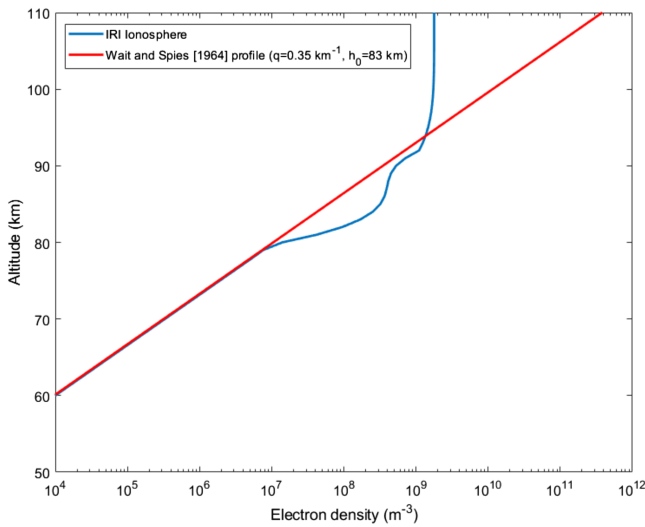


Figure 5. Distribution of electron density N_e profile as a function of the altitude taken from the IRI model 2007 (blue line) and the two-parameter electron density profile of Wait and Spies (1964) (red line) consisting of the reference height $h_0 = 83$ km and the steepness $q = 0.35$ km $^{-1}$.

by Pasko et al. (1997). According to Marshall (2012) and Liu et al. (2017), the propagation of the lightning electromagnetic field in the lower ionosphere is mainly determined by the interaction of electrons and neutrals; the geomagnetic field can be neglected when the electron-neutral collision frequency is much higher than the electron gyrofrequency. In our case, considering a geomagnetic field of about 50,000 nT based on the U.S./U.K. World Magnetic Model 2019, the calculated electron gyrofrequency $\omega_{c,e}^{\vec{\omega}} \approx 8 \times 10^6$ rad/s is much lower than the electron-neutral collision frequency, namely, $\nu_e \approx 5 \times 10^8$ rad/s at 60 km altitude and $\nu_e \approx 3 \times 10^8$ rad/s at 70 km altitude. Therefore, it is reasonable to neglect the effect of the geomagnetic field in our case (the gyrofrequency vector $\vec{\omega}_{c,e}$ in Equation (1) is assumed to be zero).

Figure 5 shows a comparison of the electron density profile N_e between the IRI 2007 model (Bilitza and Reinisch, 2008) and the two-parameter profile introduced by Wait and Spies (1964) consisting of the reference height $h_0 = 83$ km and the steepness $q = 0.35$ km $^{-1}$. It can be seen that the traditional Wait and Spies' exponential profile gives a reasonable approximation for the electron density profile below 90-km altitude compared to the IRI model. This two-parameter approach has been widely used in many VLF remote sensing studies to infer the ionospheric parameters, and it has been found to give good agreement between observed and calculated D region ionosphere characteristics (Cummer et al., 1998; McRae and Thomson, 2000, 2004; Shao et al., 2013; Thomson, 2010).

The neutral density profile of gas N_{gas} in the ionosphere is considered to be composed of 78% N_2 and 22% O_2 according to the MSIS-E-90 model (Hedin, 1991), which is valid below 100-km altitude (Marshall, 2012). Figure 6 gives the distribution of gas number density N_{gas} profile as a function of the altitude by assuming the mentioned 78% N_2 and 22% O_2 atmosphere composition.

In our study, since we only consider altitudes below 90 km, the profile of electron density N_e (≤ 90 km) is obtained from the two-parameter electron density equation below (Shao et al., 2013; Volland, 1995)

$$N_e(z) = n_0 e^{q(z-h_0)}, \quad (2)$$

where $n_0 = 3 \times 10^7$ m $^{-3}$ is a constant and q and h_0 are the steepness and the reference reflection height of the profile, respectively. The effective reflection height h_0 corresponds to the height where most of the VLF energy is reflected.

3.2. The Effect of Mountainous Terrain

To take into account the topography between the Säntis Tower and the 380-km distance sensor, the Global Digital Elevation Model Version 2 data from the Advanced Spaceborne Thermal Emission and Reflection radiometer with a horizontal grid spacing of 1 arc sec (approximately 30 m) were utilized. More details for the ground boundary can be found in (Li et al., 2016b, 2017). Figure 7 gives the top view of the terrain map (panel a) and 2-D cross section of the topographic profile (panel b) along the direct path between the Säntis Tower and the 380-km Neudorf distant sensor site (see the white dashed line in Figure 7a). Note that, in our case, the Säntis Tower is located on the highest point (the top of the Säntis Mountain) in the considered region (see Figure 7b), which allows us to take advantage of the mirror and rotational features by using the 2-D symmetric assumption to reduce the computation time and storage capability required for the simulation. However, the 2-D symmetric assumption can only be considered as reasonable as long as the terrain profile does not exhibit very intense variations along its path. A detailed analysis of this

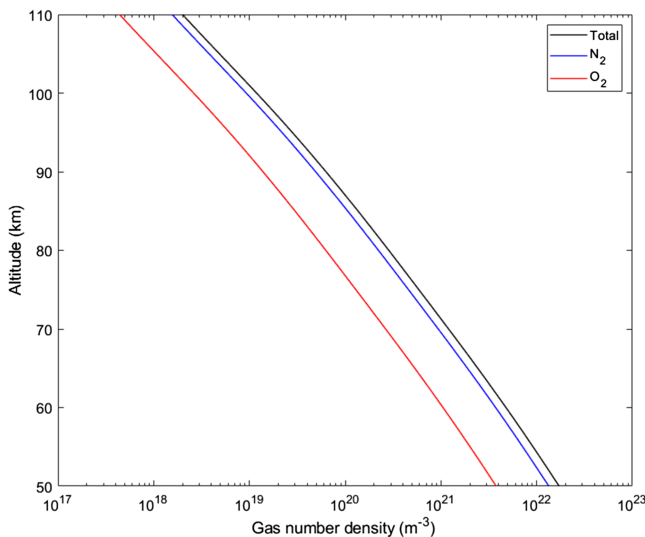


Figure 6. Distribution of gas number density N_{gas} profile as a function of the altitude taken from the MSIS-E-90 model assumed atmosphere of 78% N_2 (blue line) and 22% O_2 (red line).

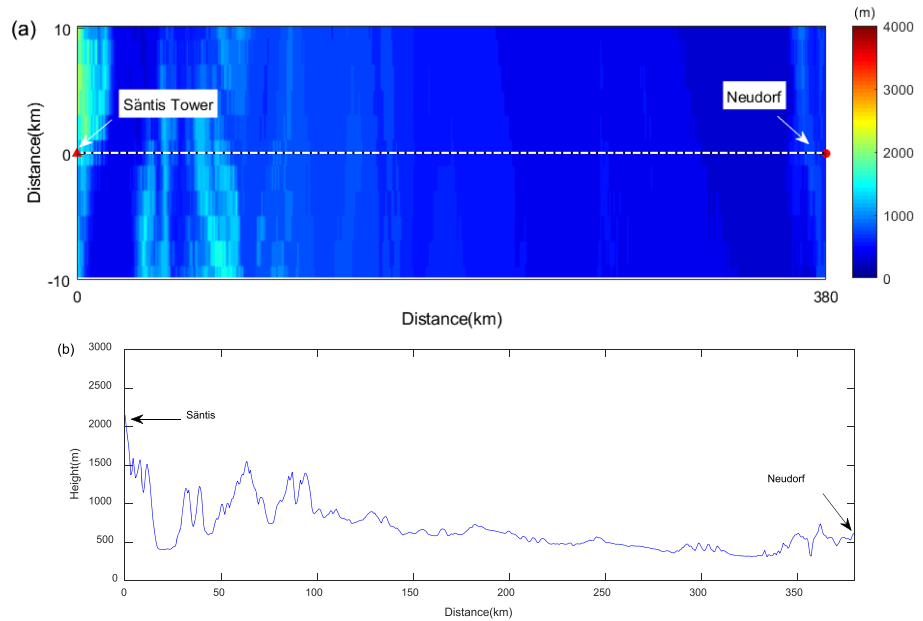


Figure 7. The terrain map (a) and 2-D cross section (b) of the topographic profiles along the direct path between the Säntis Tower and the 380-km distant Neudorf sensor site.

problem was presented in Li et al. (2017). Note that the effect of the 124-m-tall Säntis Tower is neglected in our study since the shortwave propagation round-trip time along the tower relative to the rise time of the current waveforms does not result in any significant effect on the radiated fields (Baba and Rakov, 2007; Visacro and Silveira, 2005). Since the 380-km electric field antenna in Neudorf was installed on the roof of a building with an estimated enhancement factor of about 2.6 (Pichler et al., 2010), all the simulated field values were multiplied by the factor 2.6.

4. Modeling Parameters

The working space of the FDTD model is $400 \text{ km} \times 110 \text{ km}$, which is divided into 100-m quadrilateral cells. Considering 10 steps per wavelength in the FDTD simulation to avoid numerical dispersion, the maximum frequency which can be simulated by using our full-wave FDTD model is about 300 kHz. The current distribution along the lightning channel was specified according to the transmission-line-type model with exponential current decay (MTLE) (Nucci, 1988; Rachidi and Nucci, 1990). In the MTLE model, the temporal and spatial variation of the return stroke current $I(z, t)$ is given by $I(z, t) = I(0, t - z/v) \exp(-z/\lambda)$, $t \geq z/v$, where $I(0, t)$ is the current at ground level, v is the return stroke speed, and $\lambda = 2 \text{ km}$ is a constant describing the current decay with height, inferred from sets of simultaneously measured electric and magnetic fields at two different distances (Nucci and Rachidi, 1989). Note that λ was recently found to vary in the range of hundreds meters to about 2 km in two triggered lightning events (Shao et al., 2012). The channel-base return stroke currents measured on the Säntis Tower were directly imported as $I(0, t)$ into the FDTD model. The lightning channel height was assumed to be $H = 8.0 \text{ km}$, and the return stroke speed v was set to $1.5 \times 10^8 \text{ m/s}$. The Convolutional Perfectly Matched Layer (CPML) absorbing boundary (Roden and Gedney, 2000) is used to eliminate reflections in the upper, lower, and right directions of the computational domain. The ground conductivity for the entire path was considered to be homogeneous with a conductivity $\sigma_g = 10^{-3} \text{ S/m}$ and a relative permittivity $\epsilon_{rg} = 10$. The depth of the ground layer was 10 km. The developed FDTD simulation code has been validated against results obtained using the Finite Element Method (Li et al., 2015; Paknahad et al., 2015) and using as reference for both theoretical equations and experimental data (Azadifar et al., 2017; Li et al., 2016b). Note that the influence of different types of return stroke models, different return stroke speeds and ground conductivities will be analyzed in section 6.

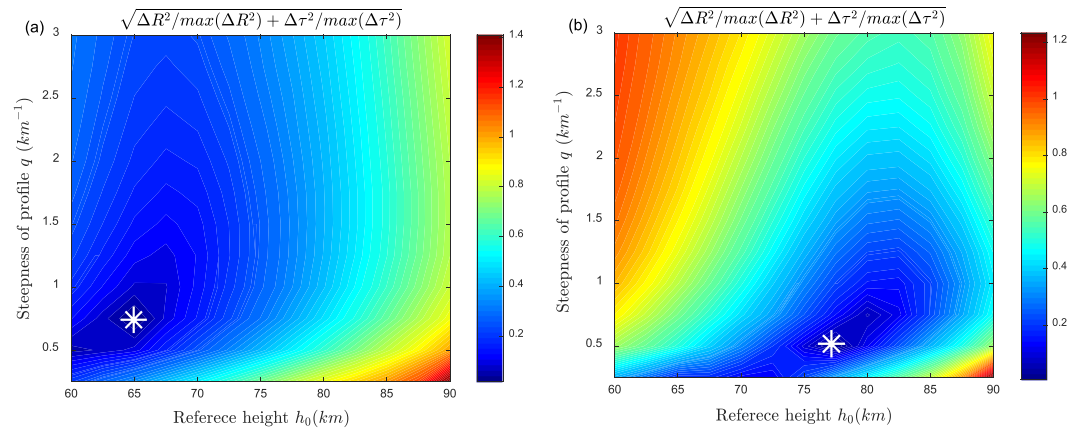


Figure 8. Squared difference map of $\sqrt{\Delta R^2 / \max(\Delta R^2) + \Delta \tau^2 / \max(\Delta \tau^2)}$ between the FDTD simulation results and the obtained simultaneous experimental data associated with the pairs of q - h_0 values.

5. Comparison Between the FDTD Simulation and the Experimental Data

In this section, we consider the two sets of simultaneously recorded return stroke current and associated E field mentioned above and shown in Figures 2b, 2d, 3b, and 3d, occurred during daytime at 09:02:39 LT and during nighttime at 23:26:59 LT, respectively. Based on the FDTD model described in section 3, we calculated the electric fields at 380 km over the mountainous terrain along the Earth's curved surface by varying the ionospheric parameters, namely, the steepness q (0.25 – 3.0 km^{-1} with step $dq = 0.25 \text{ km}^{-1}$) and the reference reflection height h_0 (60 – 90 km with step $dh = 2.5 \text{ km}$) in Equation (1). In order to find the best pair of q and h_0 values to match the experimentally observed field waveforms, the peak value ratios (R) and time delays (τ) between the ground wave and the first reflected skywave (see Figures 2 and 3) were calculated for both measured and simulated electric fields. Figure 8 shows the squared difference maps $\sqrt{\Delta R^2 / \max(\Delta R^2) + \Delta \tau^2 / \max(\Delta \tau^2)}$ calculated by using the peak value ratios (R) and time delays (τ) corresponding to different pairs of q and h_0 based on the method proposed by Shao et al. (2013). The white star markers in Figure 8 represent the local minimum of the squared difference map, which corresponds to the optimal pair of q - h_0 values. It was found that the best-matched q - h_0 values (marked by the white star) are $h_0 = 65 \text{ km}$, $q = 0.75 \text{ km}^{-1}$ and $h_0 = 77.5 \text{ km}$, $q = 0.5 \text{ km}^{-1}$ for the lightning return strokes during the daytime (see Figure 2b) and nighttime (see Figure 3b), respectively. These values agree well with previous studies in which the reference height of the ionosphere varied in the range of about 60 to 90 km as a function of local time (Smith et al., 2004). The reference height of the ionosphere in the nighttime is higher than that in the daytime since the solar radiation increases the total ionization in the D region (Han et al., 2011; Smith et al., 2004). By using the best-matched q - h_0 values, Figure 9 further shows the comparison between the measurement and the FDTD modeling results. It can be seen in the figure, after taking into account the effect of the irregular terrain along the Earth's curved surface, the vertical electric fields calculated by using our model are in generally good agreement with the measurements obtained from the 380-km sensor in Neudorf for both the daytime and nighttime cases. Discrepancies are observed in the overshooting hump of the skywave in the daytime case. The disagreement is probably due to the inadequacy of the used simplified two-parameter exponential model for the description of the daytime ionosphere (Han et al., 2011). It is noted that the effect of the consecutive skywaves in our case might be affected by the presence of the small-angle mountainous profile at close distance.

In addition, we compared our results with classical solutions presented by Schonland et al. (1940) and Smith et al. (2004). Both methods are based on the simplified ray theory of reflection within the EIWG considering the effect of the Earth's curvature. However, in order to simplify the calculation for VLF/LF waves, they assumed the lightning source to be a vertical dipole on the ground or at a certain altitude and considered the entire ionosphere to be ideal. The raypath is assumed to be straight, following the rules of geometric optics and ideally getting reflected from the ground at an effective (or virtual) ionospheric reflection height. In our case, the calculated reference reflection height h_0 using Schonland's method is 67 km for the daytime case and 81 km for the nighttime case. By assuming that the altitude of the lightning source varied from 0 to 8 km, the calculated reference reflection height h_0 using Smith's method is 66–70 km for the daytime case

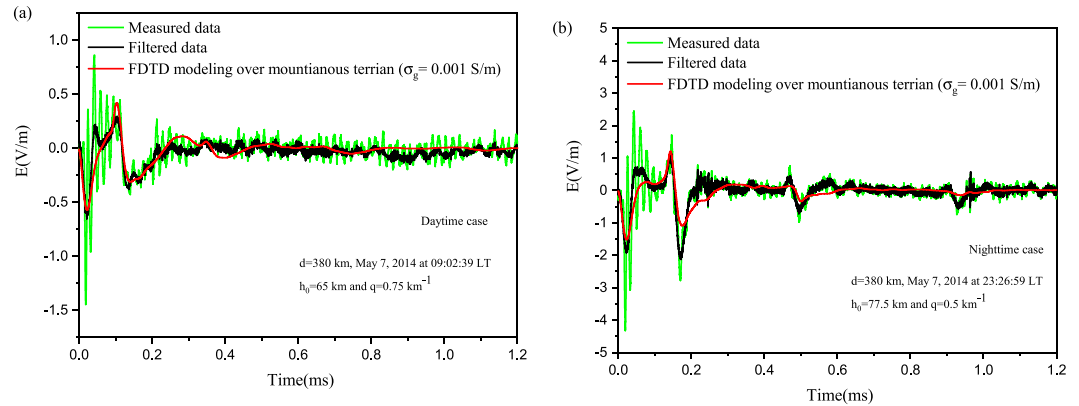


Figure 9. Comparison between the measurement and the FDTD modeling results considering the best-matched q - h_0 values. (a) Daytime case: $h_0 = 65$ km, $q = 0.75$ km⁻¹ and (b) nighttime case: $h_0 = 77.5$ km, $q = 0.5$ km⁻¹.

and 81–85 km for the nighttime case. It is found that both simplified ray theory methods overestimate the reference reflection height by a few kilometers in the range from 2 to 8 km, which confirms the conclusion that the effect of medium parameters in the EIWG could have a significant effect on the evaluated ionosphere height.

In order to investigate the effect of the medium parameters in the EIWG, we considered the Earth's curved surface as opposed to a simple flat surface. As mentioned in section 1, the effect of the Earth curvature has been considered either using correction algorithms, using full-wave ray theory over a spherical Earth (Hu and Cummer, 2006; Jacobson et al., 2018, 2009; Qin et al., 2017; Shao and Jacobson, 2009) or using a staircase approximation of the curved surface of the Earth (Tran et al., 2018). In our study, to provide a more accurate boundary approximation, the 2-D spherical coordinate FDTD model presented in section 3 was developed, while for the purpose of comparison, a 2-D cylindrical coordinate FDTD model (Li et al., 2016b) was also used to represent the case of the flat ground surface.

In the analysis, we considered four different cases for both the cylindrical and the spherical coordinate FDTD models: (i) a perfectly conducting smooth ground without electron density profile in the ionosphere, (ii) a perfectly conducting smooth ground with electron density profile in the ionosphere, (iii) a finitely conducting smooth ground (electrical parameters $\sigma_g = 0.001$ S/m and $\epsilon_{rg} = 10$) with electron density profile in the ionosphere, and (iv) a finitely conducting ground considering the mountainous terrain profile (electrical parameters $\sigma_g = 0.001$ S/m and $\epsilon_{rg} = 10$) with electron density profile in the ionosphere. Figure 10 shows the simulation results for the four different cases calculated by using the cylindrical and spherical FDTD models for both the daytime and the nighttime cases.

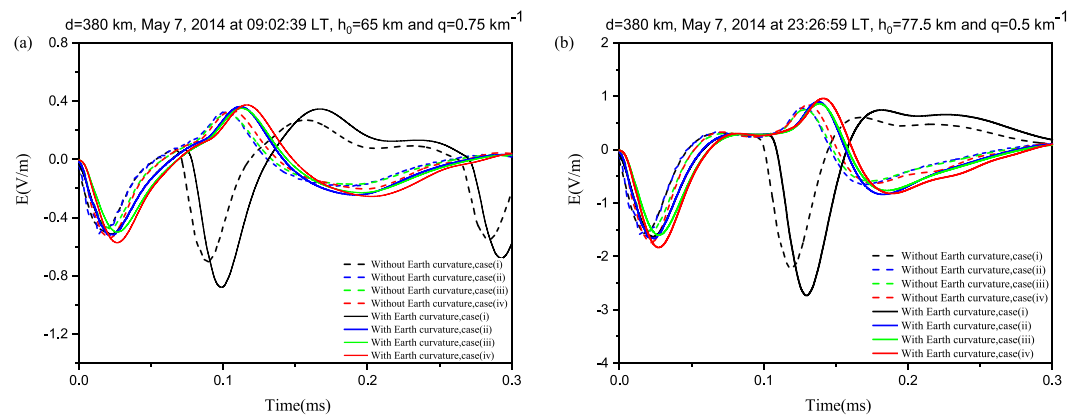


Figure 10. The simulation results for four different cases calculated by using 2-D cylindrical (dashed line) and spherical coordinate (solid line) FDTD models for both the daytime (a, May 7, 2014 at 09:02:39 LT) and nighttime (b, May 7, 2014 at 23:26:59 LT) cases.

Table 2

The Peak Value Ratios (R) and Time Delays (τ) Between the Ground and the First Reflected Skywave for the Four Considered Cases Associated With the Lightning Return Stroke Occurred at 09:02:39 LT on May 7, 2014

Different cases	Without Earth curvature		With Earth curvature	
	R	τ (μs)	R	τ (μs)
(i)	0.7	72.1	0.6	76.3
(ii)	1.6	82.8	1.4	90.8
(iii)	1.5	82.2	1.4	86.5
(iv)	1.6	85.5	1.5	89.7
Measurement	R	τ (μs)		
	2.3	89.2		

Note. (i) A perfectly conducting smooth ground without electron density profile in the ionosphere, (ii) a perfectly conducting smooth ground with electron density profile in the ionosphere, (iii) a finitely conducting smooth ground with electron density profile in the ionosphere, and (iv) a finitely conducting ground considering the mountainous terrain profile with electron density profile in the ionosphere.

It is shown that both the groundwaves and ionospheric reflected skywaves of the lightning electromagnetic fields at 380-km distance can be affected by the presence of the medium parameters in the EIWG. Tables 2 and 3 further summarize the peak value ratios (R) and time delays (τ) between the ground wave and first reflected skywave of the simulation results considering the four different cases. Note that the R and τ for the measurement data are also shown in the tables. As expected, the parameters R and τ considering the effect of the irregular terrain along the Earth's curved surface and the electron density in the ionosphere show the best consistency with the measurements for both the daytime and nighttime cases. As can be seen, both peak value ratios (R) and time delays (τ) can be significantly affected by the presence of the electron density in the ionosphere. The results associated with the perfectly conducting smooth ground surface without the electron density profile in the ionosphere always underestimate R and τ compared with the measurements since the evaluated q and h_0 are not fitted for the ideal cases. It is interesting to note that, after considering the electron density in the ionosphere, for both the cylindrical (without Earth curvature) and spherical (with Earth curvature) coordinates FDTD models, the peak value ratios R seem not to be affected so much, but, in contrast, the time delays (τ) changed by a few microseconds due to the effect of the Earth curvature and the mountainous terrain. The Earth curvature can be neglected for short distance propagation with small

Table 3

The Peak Value Ratios (R) and Time Delays (τ) Between the Ground and the First Reflected Skywave for the Four Considered Cases Associated With the Lightning Return Stroke Occurred at 23:26:59 LT on May 7, 2014

Different cases	Without Earth curvature		With Earth curvature	
	R	τ (μs)	R	τ (μs)
(i)	0.7	91.2	0.6	106.6
(ii)	2.1	107.5	1.9	118.4
(iii)	2.0	107.0	1.8	116.3
(iv)	2.0	109.4	1.9	119.2
Measurement	R	τ (μs)		
	1.8	120.2		

Note. (i) A perfectly conducting smooth ground without electron density profile in the ionosphere, (ii) a perfectly conducting smooth ground with electron density profile in the ionosphere, (iii) a finitely conducting smooth ground with electron density profile in the ionosphere, and (iv) a finitely conducting ground considering the mountainous terrain profile with electron density profile in the ionosphere.

incident angles (Hu and Cummer, 2006), but in our case, it seems that, even for the case of a perfectly conducting smooth ground, the effect of the Earth curvature is still significant when the observation distance is 380 km from Säntis Tower. The peak values of both the ground wave and the first skywave can be enhanced by the Earth's curvature relative to a flat-ground case. The enhancement of the groundwave peak is due to the definition of the observation distance d in the cylindrical and spherical coordinate systems. In order to make the comparison, we considered the observation distance d in the cylindrical and spherical coordinate systems to be the same. However, for the spherical coordinate system, d is the propagation distance between the source and the receiver considering a spherical Earth geometry; the direct line distance in the spherical coordinate system is smaller than the propagation distance d in the cylindrical coordinate system. Thus, the amplitude of the signal corresponding to the Earth curvature case is enhanced. Additionally, as discussed in Li et al. (2016b), the presence of the tall mountain on the top of which the tower is sitting can also result in a significant enhancement of the ground wave field peak. Note that, for more complex situations, for example, when high mountains are present (higher than the location of the lightning source), the effect of the mountainous terrain can be much stronger at both short and long distances (Li et al., 2017, 2016a).

Additionally, as seen in Figure 10, the waveform corresponding to Case (i) perfectly conducting smooth ground without electron density profile in the ionosphere looks very different from the other cases with the peak value of the first reflected skywave bigger than the groundwave and of same polarity as the ground wave. This is due to the fact that the results for Case (i) are obtained by assuming a Perfect Electrical Conductor boundary in the upper ionosphere region considering 65 and 77.5 km for daytime and nighttime, respectively. We included this case that assumes the ionosphere as a perfect conductor because many simplified theoretical approaches, such as the mentioned simplified ray theory method (Smith et al., 2004; Schonland et al., 1940) and the simplified waveguide model (Wait, 2013) assumed a sharply bounded perfectly conducting ionosphere.

The amplitude difference between the groundwave and the first reflected skywave can be significantly affected by the geometry for the reflection of the lightning electromagnetic waves propagating in the EIWG with different incident angles (see further discussion in Krider, 1992 and Shao et al., 2005).

As mentioned in section 5, the classical solutions based on the simplified ray theory of reflection that ignores all the medium parameters in the EIWG have been widely used in many VLF remote sensing studies to infer the ionospheric parameters based on the time delays (τ) between the ground wave and the reflected skywave of the signals. It turns out that both time delays and amplitudes of the lightning-radiated electromagnetic fields might be affected by the medium parameters in the EIWG, such as the electron density profile, the Earth curvature, and the presence of the mountainous terrain. The ideal approximation in the calculation might therefore lead to inaccuracies in the evaluation of the ionospheric parameters.

6. Discussion

In this section, we discuss the sensitivity of the obtained results by considering different return stroke models, different typical values of the return stroke speed, and the ground conductivity.

6.1. Influence of Return Stroke Models

Engineering models of the lightning return stroke have been widely used for lightning electromagnetic pulse calculations in numerous studies including lightning electromagnetic coupling with power and communication lines (Rachidi, 2012; Rakov and Rachidi, 2009; Rakov and Uman, 1998). For most modeling studies involving the lightning discharge interaction with the D region ionosphere, the lightning return stroke channel is always assumed to be a vertical electric dipole, which means the return stroke current waveform has been assumed to be the uniform along the entire lightning channel. However, the engineering models of the lightning channel account for the temporal and spatial variation of the return stroke current. In this section, three different engineering (transmission-line type) models, (i) the transmission line model (TL) (Uman and McLain, 1969), (ii) the modified transmission-line model with linear current decay with height (MTLL) (Rakov and Dulzon, 1991), and (iii) the modified transmission line model with exponential current decay with height (MTLE) (Nucci, 1988; Rachidi and Nucci, 1990), are used. In the Transmission Line (TL) model, the temporal and spatial variation of the return stroke current $I(z, t)$ is given by $I(z, t) = I(0, t - z/v)$,

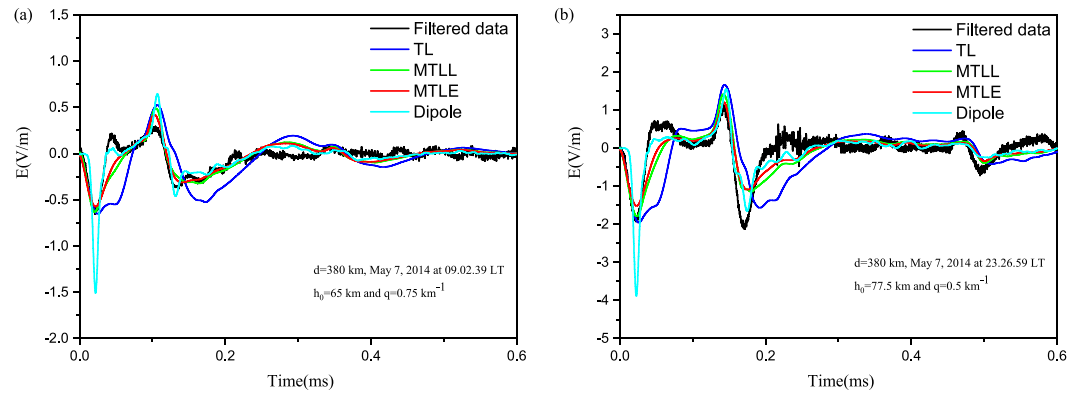


Figure 11. Lightning electric fields at 380-km distance over mountainous terrain by considering three different transmission-line-type models: (i) the transmission line model (TL), (ii) the modified transmission line model with linear current decay with height (MTLL); (iii) the modified transmission line model with exponential current decay with height (MTLE); and (iv) the Dipole model.

$t \geq z/v$, where $I(0, t)$ is the current at ground level and v is return stroke speed. In the MTLE model, the spatial and temporal variation of the return stroke current is given by $I(z, t) = I(0, t - z/v) \exp(-z/\lambda)$, $t \geq z/v$, where $\lambda = 2$ km is a constant describing the current decay with height. According to the MTLL model, the return stroke current at any level along the channel is given by $I(z, t) = (1 - z/H)I(0, t - z/v)$, $t \geq z/v$, where H is the height of the return stroke channel.

In order to compare with different return stroke models, we assumed the channel length $H = 8$ km for all the cases. Figure 11 shows the lightning electric fields at 380-km distance over mountainous terrain with an electron density profile for different return stroke models. Although the lightning channel itself is much smaller than the propagation distance (380 km), both the amplitude and waveform of the groundwave and skywave can be affected by using different models. The TL model exhibits disagreement with respect to the other transmission-line-type models due to the absence of current attenuation along the lightning channel. It can also be seen that, by assuming a dipole model for the lightning source in our case, the electric field peaks are much higher than those using transmission-line-type models.

According to Table 4, the time delays τ seem not to be affected so much by the different return stroke models, although they do change slightly. However, the peak value ratios R for the dipole model are found to be much bigger than the other transmission-line-type models. For the considered cases, the MTLE model is found to have the best agreement with the measurements for both the daytime and the nighttime waveforms.

6.2. Influence of the Return Stroke Speed

In this section, we consider typical values of the lightning return stroke speed (Rakov and Uman, 2003), namely, 1.0×10^8 , 1.5×10^8 , and 2.0×10^8 m/s. The considered values for the return stroke speed are in agreement with the range of the observed experimental data (CIGRE, 2014; Shao et al., 2012). The adopted return stroke model is MTLE. As shown in Figure 12, the peak amplitude of the lightning electric field

Table 4
The Peak Value Ratios (R) and Time Delays (τ) Between the Ground Wave and the First Reflected Skywave of the Simulation Results Obtained With Three Different Transmission-Line-Type and Dipole Models for Two Lreturn Strokes Occurred at 09:02:39 LT and 23:26:59 LT on 7 May 2014

Different return stroke models	09:02:39 LT		23:26:59 LT	
	R	τ (μ s)	R	τ (μ s)
TL	1.4	81.8	1.7	117.8
MTLL	1.3	86.6	1.6	116.8
MTLE	1.5	89.7	1.9	119.2
Dipole	2.4	87.0	2.5	123.5
Measured data	2.3	89.2	1.8	120.2

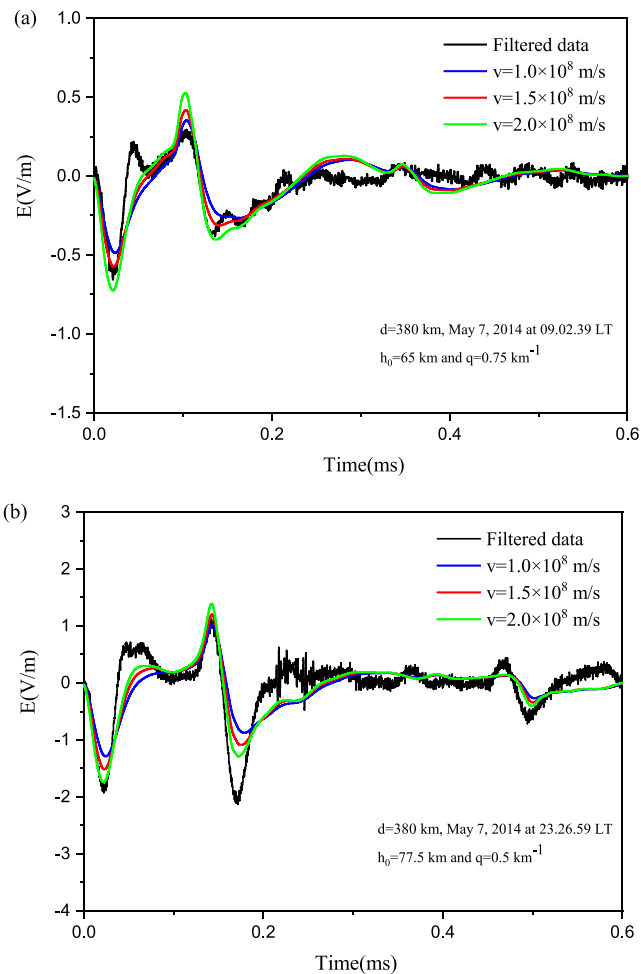


Figure 12. Lightning electric fields at 380 km over mountainous terrain considering three different return stroke speeds: (i) 1.0×10^8 , (ii) 1.5×10^8 , and (iii) 2.0×10^8 m/s.

increases by 30% when the return stroke speed increases from 1.0×10^8 to 2.0×10^8 m/s. The return stroke speed has an impact on the effective lightning channel length (Blaes et al., 2014), leading to different effective current moments in the lightning electromagnetic radiation. Table 5 further gives peak value ratios (R) and time delays (τ) associated with different return stroke speeds. The time delays τ change slightly as the return stroke speeds increase, but the peak value ratios R remain the same since the relative amplitudes between the ground wave and the first reflected skywave are unchanged for different return stroke speeds.

Table 5
The Peak Value Ratios (R) and Time Delays (τ) Between the Ground Wave and the First Reflected Skywave of the Simulation Results for Different Return Stroke Speeds for Two Lightning Return Strokes Occurred at 09:02:39 LT and 23:26:59 LT on 7 May 2014

Different return stroke speeds (m/s)	09:02:39 LT		23:26:59 LT	
	R	τ (μ s)	R	τ (μ s)
1.0×10^8	1.4	80.8	1.8	119.4
1.5×10^8	1.5	89.7	1.9	119.2
2.0×10^8	1.4	82.0	1.8	120.7
Measured data	2.3	89.2	1.8	120.2

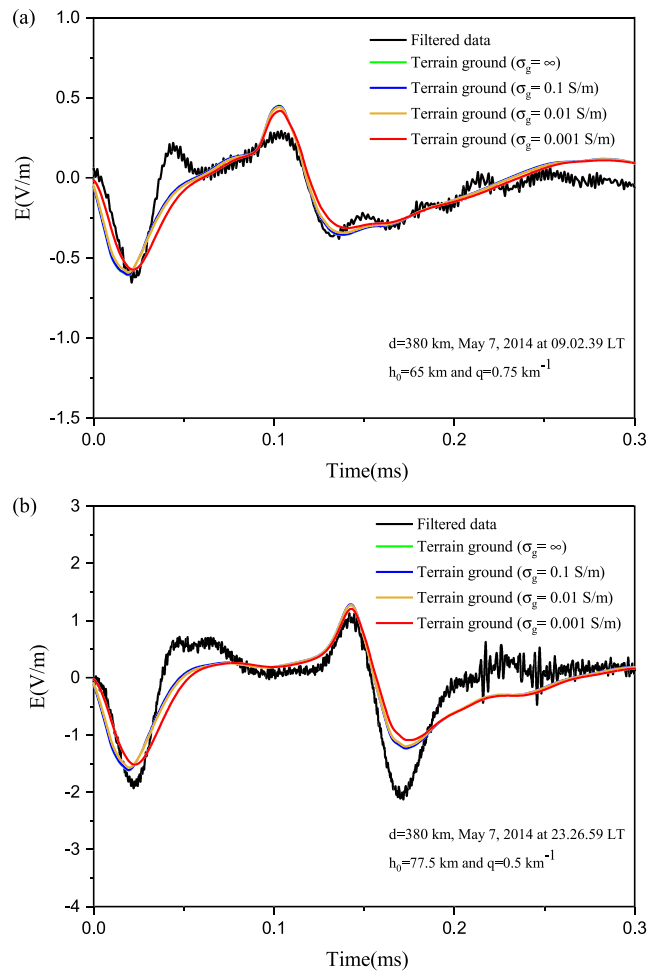


Figure 13. Lightning electric fields at 380 km over mountainous terrain by considering different ground conductivities: (i) $\sigma_g = \infty$, (ii) $\sigma_g = 0.1$ S/m, (iii) $\sigma_g = 0.01$ S/m, and (iv) $\sigma_g = 0.001$ S/m. The relative permittivity was set to $\epsilon_{rg} = 10$ in all cases.

6.3. Influence of the Ground Conductivity

The finite ground conductivity affects essentially the early time response of lightning-radiated electromagnetic fields by attenuating its peak and slowing down its rise time (Cooray, 2009; Cooray et al., 2000; Delfino, Procopio, & Rossi, 2008; Delfino, Procopio, Rossi, Rachidi, & Nucci, 2008). In Figure 13, the lightning electric fields at 380 km are evaluated by considering three different values for the ground conductivity, namely, 0.1, 0.01, and 0.001 S/m. For comparison, the results obtained assuming a perfectly conducting ground ($\sigma_g = \infty$) are also shown. The obtained results are very similar for both the ground waveform and sky waveform parts.

Table 6

The Peak Value Ratios (R) and Time Delays (τ) Between the Ground Wave and the First Reflected Skywave of the Simulation Results Associated With Different Ground Conductivities for Two Lightning Return Strokes Occurred at 09:02:39 LT and 23:26:59 LT on 7 May 2014

Different ground conductivities (σ_g , S/m)	09:02:39 LT		23:26:59 LT	
	R	τ (μ s)	R	τ (μ s)
∞	1.3	83.9	1.9	123.0
0.1	1.3	83.9	1.9	123.0
0.01	1.3	83.7	1.9	122.8
0.001	1.5	89.7	1.9	119.2
Measured data	2.3	89.2	1.8	120.2

As the ground conductivity decreases, the rise times of the ground and the first reflection pulses increase, and their peak amplitudes decrease. Table 6 further gives peak value ratios (R) and time delays (τ) associated with different ground conductivities. It is noted that the ground conductivities have comparatively more effect on the time delays τ than on the peak value ratios R . The time delays τ change a few microseconds as the ground conductivity decreases, but the peak value ratios R are almost unchanged for both the daytime and the nighttime cases.

7. Summary and Conclusion

In this paper, we developed a full-wave 2-D spherical FDTD model to analyze the propagation effects of lightning electromagnetic fields over mountainous terrain in the EIWG. The obtained results were validated against simultaneous experimental data consisting of lightning currents measured at the Säntis Tower and distant electric fields measured at 380 km in Northern Austria. After taking into account the effect of the irregular terrain between the Säntis Tower and the field measurement station, as well as the electron density profile in the ionosphere, the vertical electric fields calculated by using our model are in good agreement with the corresponding measured waveforms, for both daytime and nighttime. It was shown that the time delays and amplitudes of the lightning-radiated electromagnetic fields can be affected by the medium parameters in the EIWG including the effect of the ionospheric cold plasma characteristics, the effect of the Earth curvature, and the propagation effects over mountainous terrain. Classical solutions based on the simplified ray theory of reflection by using an ideal approximation in the EIWG have been widely used in many VLF remote sensing studies to infer the ionospheric parameters based on the time delays (τ) between the ground wave and the reflected skywave of the signals. It turns out that both the time delays and the amplitudes of the lightning-radiated electromagnetic fields might be affected by the medium parameters in the EIWG, such as the electron density profile, the Earth curvature, and the presence of the mountainous terrain. The ideal approximation in the calculation might therefore cause some uncertainties in the evaluation of the ionospheric parameters. Furthermore, although the lightning channel is much smaller than the propagation distance (380 km), both the amplitude and the waveform of the groundwave and skywave can be affected by using different models. The MTLE model is found to have the best agreement with the measurements for both the daytime and the nighttime cases. Both ground conductivities and return stroke speeds can affect the waveshape of the lightning-radiated field. The peak amplitude of the lightning electric field increases by about 30% when the assumed return stroke speed increases from 1.0×10^8 to 2.0×10^8 m/s. As the ground conductivity decreases, the lightning electric fields are found to be influenced by an increase in the rise time and a decrease of the amplitude.

Appendix A: The Filtering Approach for the 60-kHz Noise

This appendix describes the filtering method used in this study to minimize the effect of the 60-kHz noise on the measured E field waveforms at 380 km. As mentioned before, the origin of this effect is unknown and currently under investigation. It might be due to a malfunction of the integrator at the measuring station or electromagnetic noise coupling to the digitizer card caused by a bad PC power supply. The signal is measured by a flat-plate antenna and digitized with a sampling rate of 5 Ms/s, corresponding to a lower cutoff frequency of about 300 Hz. In order to reduce the effect of the 60-kHz noise, throughout this study, we applied a third-order Butterworth filter that stops the frequencies between 40 and 200 kHz based on the MATLAB digital Butterworth Bandstop filter toolbox. Figures A1a and A1b give the comparison results between different filters: the used Butterworth filter in this paper and three most commonly used filters in the references (the Bessel, Gauss, and a simple brick-wall filters). It can be seen that there is no big difference between different filters since the ringing noise in our case is relatively well separated in frequency from the received signal. Figures A2 and A3 further show the frequency spectrums between the original and filtered signals for the daytime and nighttime cases based on the used Butterworth filter. It is noted that the 60-kHz ringing noise can be effectively removed after applying the filter for both considered cases.

In order to verify the used filter in the study, we applied the Butterworth filter to the simulated FDTD results. As shown in the Figures A4 and A5, the difference between the original and filtered FDTD waveforms is very small. The results support the conclusion that the 60-kHz ringing noise in our case is sufficiently separated in frequency from the received signal, and it can be effectively removed after applying the filter.

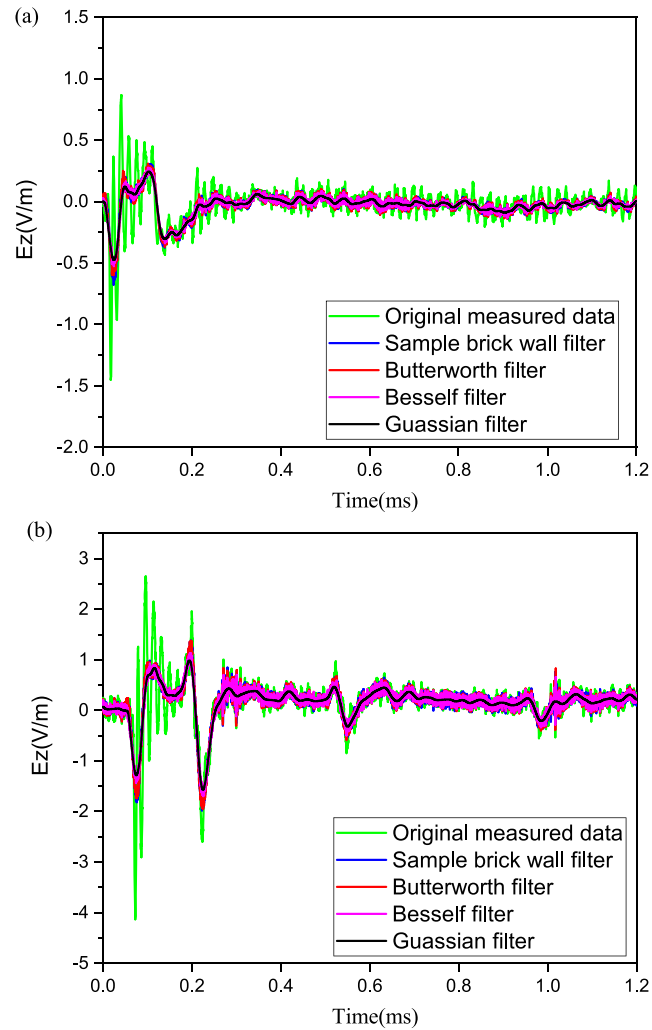


Figure A1. Comparison between different filters (Butterworth filter, Bessel filter, Gauss filter, and Simple brick-wall filter). (a) Daytime waveform and (b) nighttime waveform.

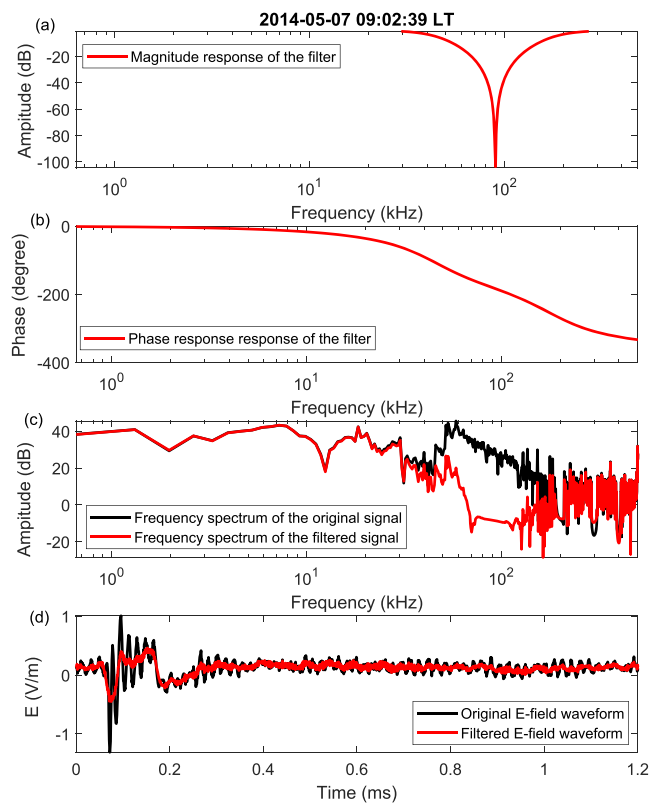


Figure A2. Comparison between the original and filtered signals corresponding to the case shown in Figure 2. (a) The magnitude spectrum of the filter; (b) the phase response of the filter; (c) the magnitude spectrum of the original (black) and filtered (red) *E* field waveform; and (d) the original (black) and filtered (red) *E* field waveform.

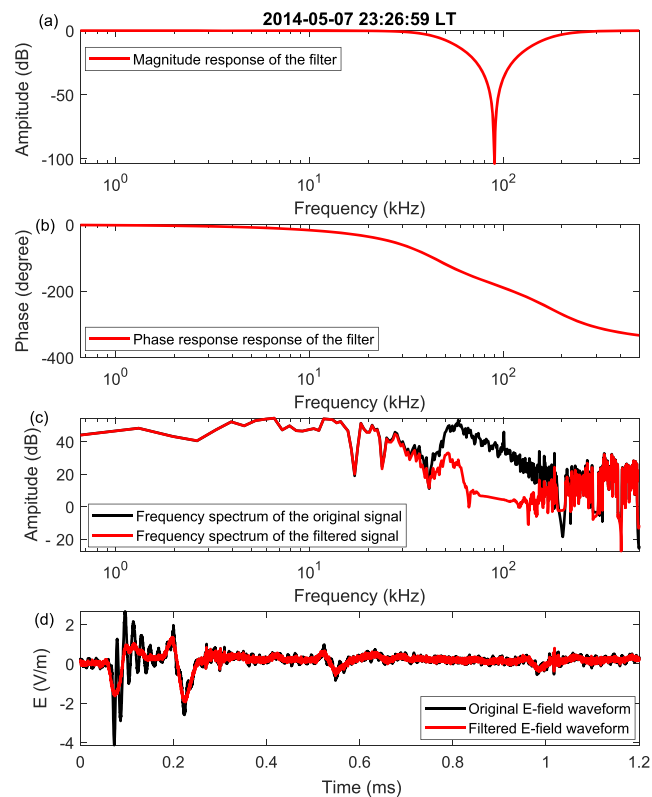


Figure A3. Similar to Figure A2 but for the case shown in Figure 3. (a) The magnitude spectrum of the filter; (b) the phase response of the filter; (c) the magnitude spectrum of the original (black) and filtered (red) *E* field waveform; and (d) the original (black) and filtered (red) *E* field waveform.

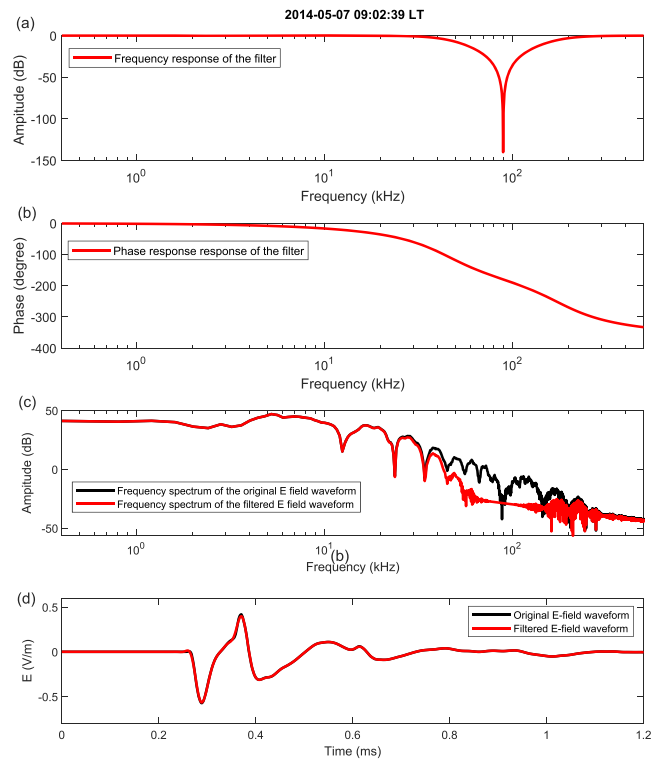


Figure A4. Comparison between the original simulated and filtered FDTD waveform corresponding to the case shown in Figure 2. (a) The magnitude spectrum of the filter; (b) the phase response of the filter; (c) the magnitude spectrum of the original (black) and filtered FDTD waveforms (red); and (d) the original (black) and filtered (red) FDTD waveforms.

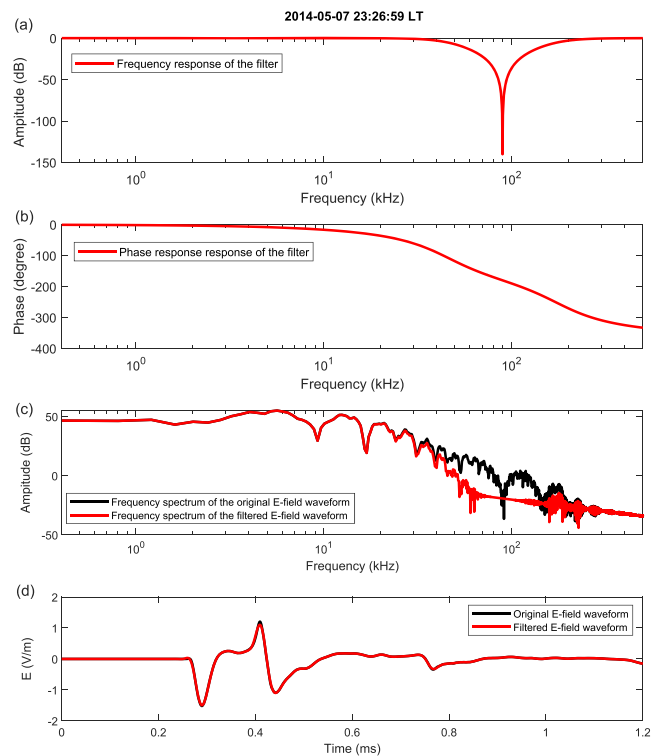


Figure A5. Similar to Figure A4 but for the case shown in Figure 3. (a) The magnitude spectrum of the filter; (b) the phase response of the filter; (c) the magnitude spectrum of the original (black) and filtered FDTD waveforms (red); and (d) the original (black) and filtered (red) FDTD waveforms.

Acknowledgments

This work was supported by the European Research Council (ERC) under the European Union H2020 programme/ERC Grant Agreement 681257 and Swiss National Science Foundation under Project 200021_147058. The Advanced Spaceborne Thermal Emission and Reflection Radiometer (ASTER) Global Digital Elevation Model Version 2 (GDEM V2) product is available for any user pursuant to an agreement between METI and NASA, which is available online (<https://asterweb.jpl.nasa.gov/gdem.asp>). The lightning current data measured from Säntis tower can be obtained from the Electromagnetic Compatibility Laboratory at Swiss Federal Institute of Technology (EPFL) in Lausanne, Switzerland (<https://emc.epfl.ch/>). The electric field data used here can be obtained from the Department Austrian Lightning Detection and Information System (ALDIS) in Vienna, Austria (<https://www.aldis.at/>).

References

Aoki, M., Baba, Y., & Rakov, V. A. (2015). FDTD simulation of LEMP propagation over lossy ground: Influence of distance, ground conductivity, and source parameters. *Journal of Geophysical Research: Atmospheres*, *120*, 8043–8051. <https://doi.org/10.1002/2015JD023245>

Azadifar, M., Li, D., Rachidi, F., Rubinstein, M., Diendorfer, G., Schulz, W., et al. (2017). Analysis of lightning-ionosphere interaction using simultaneous records of source current and 380 km distant electric field. *Journal of Atmospheric and Solar-Terrestrial Physics*, *159*, 48–56.

Azadifar, M., Paolone, M., Pavanello, D., Rachidi, F., Romero, C., & Rubinstein, M. (2014). An update on the instrumentation of the Säntis tower in Switzerland for lightning current measurements and obtained results. In *CIGRE International Colloquium on Lightning and Power Systems*. Lyon France.

Baba, Y., & Rakov, V. A. (2003). On the transmission line model for lightning return stroke representation. *Geophysical Research Letters*, *30*(24), 2294. <https://doi.org/10.1029/2003GL018407>

Baba, Y., & Rakov, V. A. (2007). Lightning strikes to tall objects: Currents inferred from far electromagnetic fields versus directly measured currents. *Geophysical Research Letters*, *34*, L19810. <https://doi.org/10.1029/2007GL030870>

Bérenger, J.-P. (2002). FDTD computation of VLF-LF propagation in the earth-ionosphere waveguide. In *Annales Des Télécommunications* (Vol. 57, pp. 1059–1090). Berlin, Germany: Springer. <https://doi.org/10.1007/BF02999454>

Bérenger, J.-P. (2005). Long range propagation of lightning pulses using the FDTD method. *IEEE Transactions on Electromagnetic Compatibility*, *47*(4), 1008–1011. <https://doi.org/10.1109/TEMC.2005.858747>

Bilitza, D., & Reinisch, B. W. (2008). International reference ionosphere 2007: Improvements and new parameters. *Advances in Space Research*, *42*(4), 599–609.

Blaes, P., Marshall, R., & Inan, U. (2014). Return stroke speed of cloud-to-ground lightning estimated from elve hole radii. *Geophysical Research Letters*, *41*, 9182–9187. <https://doi.org/10.1002/2014GL062392>

Budden, K. G. (1961). *The wave-guide mode theory of wave propagation*. London: Logos Press.

Cheng, Z., & Cummer, S. A. (2005). Broadband VLF measurements of lightning-induced ionospheric perturbations. *Geophysical Research Letters*, *32*, L08804. <https://doi.org/10.1029/2004GL022187>

CIGRE (2014). Lightning parameters for engineering applications, Technical Brochure 549, CIGRE Working Group C4.407.

Cooray, V. (2009). Propagation effects due to finitely conducting ground on lightning-generated magnetic fields evaluated using Sommerfeld's integrals. *IEEE Transactions on Electromagnetic Compatibility*, *51*(3), 526–531. <https://doi.org/10.1109/TEMC.2009.2019759>

Cooray, V., Fernando, M., Sörensen, T., Götschl, T., & Pedersen, A. (2000). Propagation of lightning generated transient electromagnetic fields over finitely conducting ground. *Journal of Atmospheric and Solar-Terrestrial Physics*, *62*(7), 583–600. [https://doi.org/10.1016/S1364-6826\(00\)00008-0](https://doi.org/10.1016/S1364-6826(00)00008-0)

Cooray, V., & Ming, Y. (1994). Propagation effects on the lightning-generated electromagnetic fields for homogeneous and mixed sea-land paths. *Journal of Geophysical Research*, *99*(D5), 10,641–10,652. <https://doi.org/10.1029/93JD03277>

Cummer, S. A., Inan, U. S., & Bell, T. F. (1998). Ionospheric D region remote sensing using VLF radio atmospherics. *Radio Science*, *33*(6), 1781–1792. <https://doi.org/10.1029/98RS02381>

Delfino, F., Procopio, R., & Rossi, M. (2008). Lightning return stroke current radiation in presence of a conducting ground: 1 Theory and numerical evaluation of the electromagnetic fields. *Journal of Geophysical Research*, *113*, D05110. <https://doi.org/10.1029/2007JD008553>

Delfino, F., Procopio, R., Rossi, M., Rachidi, F., & Nucci, C. A. (2008). Lightning return stroke current radiation in presence of a conducting ground: 2. Validity assessment of simplified approaches. *Journal of Geophysical Research*, *113*, D05111. <https://doi.org/10.1029/2007JD008567>

Friedrich, M., & Torkar, K. M. (2001). Firi: A semiempirical model of the lower ionosphere. *Journal of Geophysical Research*, *106*, 21,409–21,418. <https://doi.org/10.1029/2001JA900070>

Han, F., & Cummer, S. A. (2010). Midlatitude daytime D region ionosphere variations measured from radio atmospherics. *Journal of Geophysical Research*, *115*, A10314. <https://doi.org/10.1029/2010JA015715>

Han, F., Cummer, S. A., Li, J., & Lu, G. (2011). Daytime ionospheric D region sharpness derived from VLF radio atmospherics. *Journal of Geophysical Research*, *116*, A05314. <https://doi.org/10.1029/2010JA016299>

Hedin, A. E. (1991). Extension of the MSIS thermosphere model into the middle and lower atmosphere. *Journal of Geophysical Research*, *96*(A2), 1159–1172. <https://doi.org/10.1029/90JA02125>

Hu, W., & Cummer, S. A. (2006). An FDTD model for low and high altitude lightning-generated EM fields. *IEEE Transactions on Antennas and Propagation*, *54*(5), 1513–1522. <https://doi.org/10.1109/TAP.2006.874336>

Inan, U. S., Cummer, S. A., & Marshall, R. A. (2010). A survey of ELF and VLF research on lightning-ionosphere interactions and causative discharges. *Journal of Geophysical Research*, *115*, A00E36. <https://doi.org/10.1029/2009JA014775>

Jacobson, A. R., Holzworth, R. H., Pfaff, R., & Heelis, R. (2018). Coordinated satellite observations of the very low frequency transmission through the ionospheric D layer at low latitudes, using broadband radio emissions from lightning. *Journal of Geophysical Research: Space Physics*, *123*, 2926–2952. <https://doi.org/10.1002/2017JA024942>

Jacobson, A. R., Shao, X., & Holzworth, R. (2009). Full-wave reflection of lightning long-wave radio pulses from the ionospheric D region: Numerical model. *Journal of Geophysical Research*, *114*, A03303. <https://doi.org/10.1029/2008JA013642>

Krider, E. P. (1992). On the electromagnetic fields, Poynting vector, and peak power radiated by lightning return strokes. *Journal of Geophysical Research*, *97*(D14), 15,913–15,917. <https://doi.org/10.1029/92JD01490>

Lay, E. H., & Shao, X. (2011). High temporal and spatial-resolution detection of D-layer fluctuations by using time-domain lightning waveforms. *Journal of Geophysical Research*, *116*, A01317. <https://doi.org/10.1029/2010JA016018>

Lay, E. H., Shao, X., & Jacobson, A. R. (2014). D region electron profiles observed with substantial spatial and temporal change near thunderstorms. *Journal of Geophysical Research: Space Physics*, *119*, 4916–4928. <https://doi.org/10.1002/2013JA019430>

Lehtinen, N. G., & Inan, U. S. (2008). Radiation of ELF/VLF waves by harmonically varying currents into a stratified ionosphere with application to radiation by a modulated electrojet. *Journal of Geophysical Research*, *113*, A06301. <https://doi.org/10.1029/2007JA012911>

Lehtinen, N. G., & Inan, U. S. (2009). Full-wave modeling of transionospheric propagation of VLF waves. *Geophysical Research Letters*, *36*, L03104. <https://doi.org/10.1029/2008GL036535>

Li, D., Azadifar, M., Rachidi, F., Rubinstein, M., Diendorfer, G., Sheshyekani, K., et al. (2016a). Analysis of lightning electromagnetic field propagation in mountainous terrain and its effects on ToA-based lightning location systems. *Journal of Geophysical Research: Atmospheres*, *121*, 895–911. <https://doi.org/10.1002/2015JD024234>

- Li, D., Azadifar, M., Rachidi, F., Rubinstein, M., Paolone, M., Pavanello, D., et al. (2016b). On lightning electromagnetic field propagation along an irregular terrain. *IEEE Transactions on Electromagnetic Compatibility*, 58(1), 161–171. <https://doi.org/10.1109/TEMC.2015.2483018>
- Li, D., J. Paknahad, F. Rachidi, M. Rubinstein, K. Sheshyekani, Q. Zhang, and Z. Wang (2015), Propagation effects on lightning magnetic fields over hilly and mountainous terrain, in 2015 IEEE International Symposium on Electromagnetic Compatibility (EMC), Dresden, Germany, pp. 1436–1440, IEEE.
- Li, D., Rubinstein, M., Rachidi, F., Diendorfer, G., Schulz, W., & Lu, G. (2017). Location accuracy evaluation of ToA-based lightning location systems over mountainous terrain. *Journal of Geophysical Research: Atmospheres*, 122, 11,760–11,775. <https://doi.org/10.1002/2017JD027520>
- Li, D., Zhang, Q., Wang, Z., & Liu, T. (2014). Computation of lightning horizontal field over the two-dimensional rough ground by using the three-dimensional FDTD. *IEEE Transactions on Electromagnetic Compatibility*, 56(1), 143–148. <https://doi.org/10.1109/TEMC.2013.2266479>
- Liu, N., Dwyer, J. R., & Cummer, S. A. (2017). Elves accompanying terrestrial gamma ray flashes. *Journal of Geophysical Research: Space Physics*, 122, 10,563–10,576. <https://doi.org/10.1002/2017JA024344>
- Liu, Z., Koh, K. L., Mezentsev, A., Enno, S., Sugier, J., & Füllekrug, M. (2016). Variable phase propagation velocity for long-range lightning location system. *Radio Science*, 51(11), 1806–1815. <https://doi.org/10.1002/2016RS006058>
- Marshall, R. A. (2012). An improved model of the lightning electromagnetic field interaction with the D-region ionosphere. *Journal of Geophysical Research*, 117, A03316. <https://doi.org/10.1029/2011JA017408>
- McRae, W. M., & Thomson, N. R. (2000). Vlf phase and amplitude: Daytime ionospheric parameters. *Journal of Atmospheric and Solar-Terrestrial Physics*, 62(7), 609–618. [https://doi.org/10.1016/S1364-6826\(00\)00027-4](https://doi.org/10.1016/S1364-6826(00)00027-4)
- McRae, W. M., & Thomson, N. R. (2004). Solar flare induced ionospheric D-region enhancements from VLF phase and amplitude observations. *Journal of Atmospheric and Solar-Terrestrial Physics*, 66(1), 77–87. <https://doi.org/10.1016/j.jastp.2003.09.009>
- Ming, Y., & Cooray, V. (1994). Propagation effects caused by a rough ocean surface on the electromagnetic fields generated by lightning return strokes. *Radio Science*, 29(01), 73–85. <https://doi.org/10.1029/93RS02085>
- Nucci, C. A. (1988). On lightning return stroke models for LEMP calculations, in *Proc. In 19th Int Conf. Lightning Protection*. Graz, Austria.
- Nucci, C. A., & Rachidi, F. (1989). Experimental validation of a modification to the transmission line model for LEMP calculation. In *8th Symposium and Technical Exhibition on Electromagnetic Compatibility*. Zurich.
- Paknahad, J., Sheshyekani, K., Hamzeh, M., Li, D., & Rachidi, F. (2015). The influence of the slope angle of the ocean–land mixed propagation path on the lightning electromagnetic fields. *IEEE Transactions on Electromagnetic Compatibility*, 57(5), 1086–1095. <https://doi.org/10.1109/TEMC.2015.2435894>
- Pasko, V. P., Inan, U. S., Bell, T. F., & Taranenko, Y. N. (1997). Sprites produced by quasi-electrostatic heating and ionization in the lower ionosphere. *Journal of Geophysical Research*, 102(A3), 4529–4561. <https://doi.org/10.1029/96JA03528>
- Pichler, H., Diendorfer, G., & Mair, M. (2010). Some parameters of correlated current and radiated field pulses from lightning to the Gaisberg Tower. *IEEE Transactions on Electrical and Electronic Engineering*, 5(1), 8–13. <https://doi.org/10.1002/tee.20486>
- Qin, Z., Chen, M., Zhu, B., & Du, Y. (2017). An improved ray theory and transfer matrix method-based model for lightning electromagnetic pulses propagating in Earth-ionosphere waveguide and its applications. *Journal of Geophysical Research: Atmospheres*, 122, 712–727. <https://doi.org/10.1002/2016JD025599>
- Rachidi, F. (2012). A review of field-to-transmission line coupling models with special emphasis to lightning-induced voltages on overhead lines. *IEEE Transactions on Electromagnetic Compatibility*, 54(4), 898–911. <https://doi.org/10.1109/TEMC.2011.2181519>
- Rachidi, F., & Nucci, C. (1990). On the Master, Uman, Lin, Standler and the modified transmission line lightning return stroke current models. *Journal of Geophysical Research*, 95(D12), 20,389–20,393. <https://doi.org/10.1029/JD095iD12p20389>
- Rakov, V. A., and A. Dulzon (1991), A modified transmission line model for lightning return stroke field calculations, in *Proc. 9th Int. Symp. Electromagn. Compat.*, pp. 229–235.
- Rakov, V. A., & Rachidi, F. (2009). Overview of recent progress in lightning research and lightning protection. *IEEE Transactions on Electromagnetic Compatibility*, 51(3), 428–442. <https://doi.org/10.1109/TEMC.2009.2019267>
- Rakov, V. A., & Uman, M. A. (1998). Review and evaluation of lightning return stroke models including some aspects of their application. *IEEE Transactions on Electromagnetic Compatibility*, 40(4), 403–426. <https://doi.org/10.1109/15.736202>
- Rakov, V. A., & Uman, M. A. (2003). *Lightning: Physics and effects*. Cambridge, U.K.: Cambridge University Press.
- Roden, J. A., & Gedney, S. D. (2000). Convolution PML (CPML): An efficient FDTD implementation of the CFS–PML for arbitrary media. *Microwave and Optical Technology Letters*, 27(5), 334–339. [https://doi.org/10.1002/1098-2760\(20001205\)27:5<334::AID-MOP14>3.0.CO;2-A](https://doi.org/10.1002/1098-2760(20001205)27:5<334::AID-MOP14>3.0.CO;2-A)
- Romero, C., Paolone, M., Rubinstein, M., Rachidi, F., Rubinstein, A., Diendorfer, G., et al. (2012). A system for the measurements of lightning currents at the Sántis tower. *Electric Power Systems Research*, 82(1), 34–43. <https://doi.org/10.1016/j.epsr.2011.08.011>
- Romero, C., Rachidi, F., Paolone, M., & Rubinstein, M. (2013). Statistical distributions of lightning currents associated with upward negative flashes based on the data collected at the Sántis (EMC) tower in 2010 and 2011. *IEEE Transactions on Power Delivery*, 28(3), 1804–1812. <https://doi.org/10.1109/TPWRD.2013.2254727>
- Schmitter, E. (2014). Remote sensing and modeling of lightning caused long recovery events within the lower ionosphere using VLF/LF radio wave propagation. *Advances in Radio Science*, 12, 241–250. <https://doi.org/10.5194/ars-12-241-2014>
- Schonland, B. F. J., Elder, J. S., Hodges, D. B., Phillips, W. E., & Wyk, J. W. V. (1940). The wave form of atmospheric at night. *Proceedings of the Royal Society of London. Series A: Mathematical and Physical Sciences*, 176(965), 180–202. <https://doi.org/10.1098/rspa.1940.0085>
- Schulz, W., and G. Diendorfer (2000), Evaluation of a lightning location algorithm using an elevation model, in 25th International Conference on Lightning Protection (ICLP), Rhodos.
- Shao, X.-M., & Jacobson, A. R. (2009). Model simulation of very low-frequency and low-frequency lightning signal propagation over intermediate ranges. *IEEE Transactions on Electromagnetic Compatibility*, 51(3), 519–525. <https://doi.org/10.1109/TEMC.2009.2022171>
- Shao, X.-M., Jacobson, A. R., & Fitzgerald, T. J. (2005). Radio frequency radiation beam pattern of lightning return strokes: Inferred from forte satellite observations. *Journal of Geophysical Research*, 110. <https://doi.org/10.1029/2005JD006010>
- Shao, X.-M., Lay, E., & Jacobson, A. R. (2012). On the behavior of return stroke current and the remotely detected electric field change waveform. *Journal of Geophysical Research*, 117, D07105. <https://doi.org/10.1029/2011JD017210>
- Shao, X.-M., Lay, E. H., & Jacobson, A. R. (2013). Reduction of electron density in the night-time lower ionosphere in response to a thunderstorm. *Nature Geoscience*, 6(1), 29. <https://doi.org/10.1038/ngeo1668>
- Smith, D. A., Heavner, M. J., Jacobson, A. R., Shao, X. M., Massey, R. S., Sheldon, R. J., & Wiens, K. C. (2004). A method for determining intracloud lightning and ionospheric heights from VLF/LF electric field records. *Radio Science*, 39(1), RS1010. <https://doi.org/10.1029/2002RS002790>

- Thévenot, M., Bérenger, J.-P., MonediÈre, T., & Jecko, F. (1999). A FDTD scheme for the computation of VLF-LF propagation in the anisotropic Earth-ionosphere waveguide in. *Annales des télécommunications*, 54, 297–310. <https://doi.org/10.1007/BF02995540>
- Thomson, N. R. (2010). Daytime tropical D region parameters from short path VLF phase and amplitude. *Journal of Geophysical Research*, 115, A09313. <https://doi.org/10.1029/2010JA015355>
- Tran, T. H., Baba, Y., & Rakov, V. A. (2018). A study of Earth's curvature effect on LEMP propagation over distances ranging from 100 to 1000 km. In *XVI International Conference on Atmospheric Electricity*. Nara Japan.
- Tran, T. H., Baba, Y., Somu, V. B., & Rakov, V. A. (2017). FDTD modeling of LEMP propagation in the Earth-ionosphere waveguide with emphasis on realistic representation of lightning source. *Journal of Geophysical Research: Atmospheres*, 122, 12,918–12,937. <https://doi.org/10.1002/2017JD027305>
- Uman, M. A., & McLain, D. K. (1969). Magnetic field of lightning return stroke. *Journal of Geophysical Research*, 74(28), 6899–6910. <https://doi.org/10.1029/JC074i028p06899>
- Visacro, S., & Silveira, F. H. (2005). Lightning current waves measured at short instrumented towers: The influence of sensor position. *Geophysical Research Letters*, 32, L18804. <https://doi.org/10.1029/2005GL023255>
- Volland, H. (1995). Handbook of atmospheric electrodynamics, vol. ii.
- Wait, J. R. (2013). *Electromagnetic waves in stratified media: Revised edition including supplemented material* (Vol. 3). Oxford, New york, Toronto, Sydney, Braunschweig: Pergamon Press Ltd.
- Wait, J. R., and K. P. Spies (1964), Characteristics of the Earth-ionosphere waveguide for VLF radio waves, US Dept. of Commerce, National Bureau of Standards: for sale by the Supt. of Doc., US Govt. Print. Off.
- Wait, J. R., & Walters, L. C. (1963). Reflection of VLF radio waves from an inhomogeneous ionosphere. Part I. Exponentially varying isotropic model. *Journal of research of the National Bureau of Standards*, 67(6), 361–367.
- Zhang, Q., Jing, X., Yang, J., Li, D., & Tang, X. (2012). Numerical simulation of the lightning electromagnetic fields along a rough and ocean-land mixed propagation path. *Journal of Geophysical Research*, 117, D20304. <https://doi.org/10.1029/2012JD017851>
- Zhang, Q., Yang, J., Jing, X., Li, D., & Wang, Z. (2012). Propagation effect of a fractal rough ground boundary on the lightning-radiated vertical electric field. *Atmospheric Research*, 104, 202–208. <https://doi.org/10.1016/j.atmosres.2011.10.009>